

Empire of the Sun VASSAL v5.0 User Guide

As a brief introduction, this guide's purpose is not to explain how to use VASSAL. The document assumes the player is already familiar with VASSAL and the basics of moving counters around, using its menus, connecting to servers to play online, logging moves for PBEM play and other basic VASSAL functionality. This guide is to explain how to use this specific module and its various features created specifically for playing Empire of the Sun.

Conventions

To indicate a hot key or keyboard command the document will use *< command >* to indicate key presses. For example *<F>* means press the *F* key. Combinations will use the *+* sign. For example *<CTRL + R>* means press the *Control* and *R* keys at the same time. Similarly, there is *<SHIFT + 1>* which means to press the *Shift* and *1* keys together

Setting up a New Game

Unlike previous versions the scenarios are no longer defined via pre-defined files. To start a new game you will always choose "New Game". Join as the "Referee" player so it can properly setup cards and pieces. There is a menu button on the toolbar for setting up the various scenarios (see "The Menu Toolbar"). The four options are shown in the figure (please note that these pictures won't match your system exactly due to different operating system UI styles).

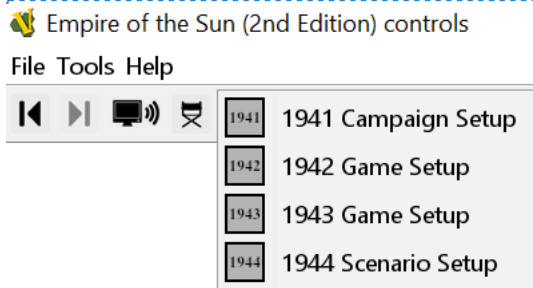


Figure 1. Game Setup Options

Please note that upon selecting an option VASSAL will seem to freeze. This is normal as it takes a small amount of time to run through all the automation scripts to clean up the current map, organize the cards and set up the pieces. After the window reports that the scenario setup is finished use "retire" to switch to the right player side before drawing any cards (unless using an online card utility like ACTS or playing solitaire).

For competitive purposes, a third party should generate the initial game file as "Referee" after set up and then send it to both players so they can choose their sides and play. If the players aren't using VASSAL to track cards or die rolls playing a side is generally irrelevant since all players can manipulate the game counters without restriction. In casual games the honor system should suffice for players to generate a game file and not use the "Referee" side.

The Menu Toolbar

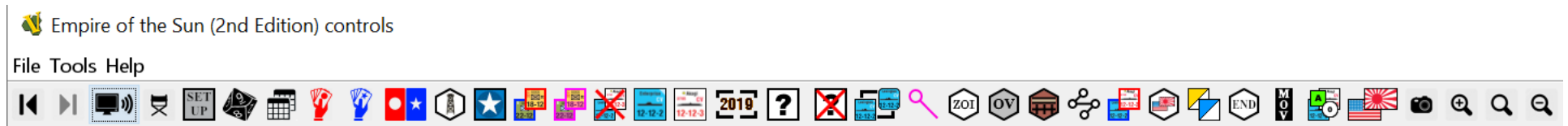


Figure 2. Depending on your screen you may not see all buttons in a single line

Some of these functions should be familiar and self-explanatory (the tool-tips are helpful). In some cases they function the same as in other VASSAL modules but simply have a different icon. Here's a list of what these buttons do (order from left to right as compared to the figure):

1. **Undo (Rewind).** This is VASSAL's standard "undo" function to take back moves.
2. **Replay (Forward).** This is VASSAL's standard "replay" function to move through a play log.
3. **Server.** This is VASSAL's standard server connections function with a different icon.
4. **Role (Retire).** This is VASSAL's standard "retire" function to switch between player sides or become an observer.
5. **Set up.** This is a pull down menu allowing you to choose a scenario setup (1941, 1942, 1943 and 1944).
6. **Roll a die.** This icon has the 1d10 which will show a results from 0-9. Recommended for online live play.
7. **Charts.** Various useful game charts are shown in a window here with tabs to switch between them. They include the Terrain Effects Chart, Combat CRTs and the Allied Nationality HQ Activation rules.
8. **Japanese Hand.** The window is public so anyone can open the hand BUT only the Japanese player and Referee can see the face down ("HIDDEN") cards. Observers and Allied players will only see card backs unless the card is flipped face up. See the section on the Japanese Player Hand for more information.
9. **Allied Hand.** The window is public so anyone can open the hand BUT only the Allied player and Referee can see the face down ("HIDDEN") cards. Observers and Japanese players will only see card backs unless the card is flipped face up. See the section on the Allied Player Hand for more information.
10. **Card Piles List.** The Player windows contain the physical discard/removed from game piles but this window can show the contents of these piles in text list form allowing the players to more easily examine the contents and look for a specific card if they need to take one to their hand.
11. **Resources List.** This window will show a list of which resource hexes are controlled by Japan and which are controlled by the Allies.
12. **Progress of War List.** This window will show a list of locations marked as progress of war to easily keep track of them during play.
13. **Active List.** This window will show a list of activated units of both sides to easily locate them.
14. **Out of Supply List.** This window will show a list of units that have been marked Out of supply by the players to more easily locate them.
15. **Eliminated Pile.** This window brings up the piles of eliminated units in a separate window.
16. **Allied Reinforcements.** This window contains all Allied reinforcement pieces grouped by turn or special event.
17. **Japanese Reinforcements.** This window contains all Japanese reinforcement pieces grouped by turn or special event.
18. **Setup toggle.** This button causes units to show/hide their printed at start setup location (or turn arrival for a reinforcement). It's merely aesthetic and has no impact on gameplay. It's an option to help de-clutter the counters and the fact that in VASSAL they aren't really needed since the setup commands place the units in their proper locations and the units in the reinforcements charts are already in their proper places.
19. **Markers.** This window brings up markers that can be created and put on the map. This includes markers for card events (like Paratroopers, Doolittle, High Altitude Interceptors, etc.) and game play aid markers like Battle hex markers and Range markers (see the section on Markers for more information).
20. **Counter Corners.** This toggle will switch the display of counters to have rounded corners or straight ones. It's merely aesthetic and has no impact on gameplay.
21. **Range Tool.** This is VASSAL's standard range tool for measuring distances between two hexes "as the crow flies".
22. **ZOI options.** This pull down menu allows you to turn on/off shading displays for Japanese and Allied Aircraft ZOI.

23. **Overlay options.** This pull down menu allows you to turn on/off display of overlays that shade hexes of individual countries/territories on the map.
24. **Route Toggles.** This pull down menu allows you to toggle the display of a strategic route on the map to show whether it's built or not.
25. **Movement Trail Options.** This pull down menu allows you to turn on/off movement trail displays as you move units across the map.
26. **Deactivate Options.** This pull down menu allows you to deactivate all units from one side or the other with a single button.
27. **Toggle Control Marker Borders.** This button toggles the display of hex borders for control markers in a hex.
28. **Inter-Service Rivalry options.** This pull down menu allows you to toggle the current ISR situation for both Japan and the US.
29. **End of Turn.** Some end of turn clean up functions to execute automatically like converting progress of war hexes and moving the turn marker forward.
30. **Unmark Movement.** This is VASSAL's standard button to unmark units that have moved on the map.
31. **Toggle Unit display.** This buttons toggles the display of units on the map to show or hide them.
32. **Toggle Control Marker display.** This button toggles the display of control markers on the map to show or hide them.
33. **Snapshot.** This is VASSAL's standard button to take a screenshot of the current map.
34. **Zoom in.** This is VASSAL's standard button to zoom in to the map.
35. **Set Zoom.** This is VASSAL's standard button to set a specific zoom level for the map.
36. **Zoom out.** This is VASSAL's standard button to zoom out of the map.

Flipping Counters

If it makes sense for a marker or unit to flip from front to back or vice versa it will have a Flip right-click menu command that can be accessed with the hot-key <CTRL + F>

The Map & Hex Control

The map has been significantly altered with an eye to providing better information and gameplay features. Aside from moving pieces around the map per normal VASSAL usage many map hexes have commands added to them for the purposes of setting control. You can now select a hex (and the entire hex will be highlighted) and use the right-click menu to add/change/remove control markers. The module no longer has control markers that are created from a piece menu. Instead, the game keeps track of hex control and it will allow appropriate menu commands for that hex to alter control. Note that not ALL hexes have this feature, only hexes for which tracking control is relevant have it. There is no point in having control markers for water hexes and unnamed locations.

If a hex has a city, airbase, port or is a resource hex, you will be able to select it. In addition, the hexes corresponding to the Kwai Bridge (2108 and 2109) can have a Japanese control marker for purposes of fulfilling the requirements of "Kwai Bridge" (Japanese Card #18). Hex 3606 in Honshu Japan must be controlled by the Allies to conquer the Home Islands and can also be selected. Here is a summary of commands:

- Japanese Capture <CTRL + C> (gray Japanese flag)
- Japanese Control <CTRL + J> (color Japanese flag)
- Progress of War <CTRL + P> (gray US/UK/USSR flag)
- Allied Control <CTRL + A> (color US/UK/USSR flag)
- Remove Marker <CTRL + R> (no marker at all)

Not all commands will be available at the same time for a particular hex, only those that make sense. For example, a hex that starts the game inside the border of the Empire of Japan will not have Japanese Capture or Control commands, only Progress of War. Once a hex is under Progress of War, it can be set to Allied Control at the end of the game turn. Hexes that are under Allied control (with or without a marker) can be set to Japanese Capture.

The point of using “Japanese Capture” is that these hexes do not count for Progress of War and can only be set back to Allied Control by changing or removing the marker. This is per the rules on Progress of War (16.4). Note that even though Progress of War is only relevant starting on Game Turn 4, the hexes will still keep track of captured/controlled hexes and progress of war (it was simply easier to have the program do this all the time).

The exceptions are the Kwai Bridge hexes (2108/2109) and hex 3606 in Honshu, these are unnamed locations so they are set directly to Japanese/Allied control or the marker is removed as the case may be.

Use the End of Turn menu toolbar button to automatically convert Captured/Progress of War hexes to the proper control marker (or remove it entirely if need be), so they don't have to be done one by one.

Status Markers on the Map

Various status markers have been immobilized and can only be moved via commands (using either the right-click menu or hot-keys). Most numerically based status markers can also be set directly to a value using numeric hot-keys. Generally speaking the number keys <0> thru <9> will set values from 0 to 9. For 10 or more use <CTRL + *number*>. For negative values use <SHIFT + *number*> (for example, War in Europe values go from -7 to +3). Note that these numeric hot-keys WON'T appear on the right-click menu to avoid clutter. The specifics of each marker are as follows:

1. Japanese Divisions in China.

This marker is fixed in place, you can select but not move it. You can use <CTRL + S> to subtract one division and the marker will automatically move along the track to the left accordingly. You can also use <CTRL + A> to add one division and it will move one box to the right. This marker has numeric commands to set values directly as well.

2. China Front Status

This marker is fixed in place, you can select but not move it. You can use <CTRL + C> to move the marker towards collapse one box at a time. You can use <CTRL + S> to move it towards Stable one box at a time. It also has numeric commands from <0> (Collapse) to <5> (Stable) to set the front directly if needed. The marker can be flipped to note when a China Offensive is conducted.

3. India Status

This marker is fixed in place, you can select but not move it. You can use <CTRL + R> to move the marker towards revolt one box at a time. You can use <CTRL + S> to move it directly to the Stable box. The marker can be flipped over to its Surrender side.

4. Burma Road Marker

This marker is fixed in place, you can select but not move it. You can use <CTRL + C> to move the marker directly to the CLOSED box. You can use CTRL + H to move it directly to Hump box. You can use <CTRL + O> to move it to the Open box. The marker can be flipped to set it's Hump/No Hump side.

5. Game Turn Marker

This marker is NOT fixed in place. You can move it along the track freely (this is because units can also be placed on the turn track and you need them to stack). However it still has a next turn function <CTRL + N> for advancing the turn and it can also be set directly with numeric hot-keys. It can also be flipped to keep track of the Tojo event (Japanese Card #43).

6. Political Will Marker

This marker is fixed in place, you can select but not move it. You can use <CTRL + S> to subtract one PW and the marker will automatically move along the track to the bottom accordingly. You can also use <CTRL + A> to add one PW and it will move one box towards the top. This marker has numeric commands to set values directly as well.

7. War in Europe Marker

This marker is fixed in place, you can select but not move it. You can use <CTRL + S> to subtract one from the War in Europe and the marker will automatically move along the track to the bottom accordingly. You can also use <CTRL + A> to add one PW and it will move one box towards the top. This marker has numeric hot-keys to set values directly as well.

8. Japanese Resources Marker

This marker is fixed in place, you can't even select it. Resources are tracked automatically by the program whenever control of a resource hex changes. This alleviates the burden of the player having to do this manually. In addition there is a window (see Menu Toolbar) with a list that keeps track of the number of resource hexes each side controls and which ones.

9. ASP Markers

This marker can be freely moved along the general resources track. The implementation is a little different in that the numeric hot-keys are used not to track ASPs and move the token but instead to track the number of ASPs that side has USED in the current turn. The position of the marker in the general record track indicates the number of actual ASPs. The marker has a transport ship silhouette with both values expressed as "#Used APS / # Actual ASPs". In addition the Japanese marker can be flipped to set Barges/No Barges per the event "Ants" (Japanese Card #73).

10. General Purpose Markers on the Map

Japanese Air Replacements, Japanese Naval Replacements, Passes (both Allies and Japan), Cards Drawn (both Allies and Japan) and Activations Remaining (both Allies and Japan) can be picked up and freely moved around the general resources track. There is no additional functionality assigned to them.

Units on the Map

Generally speaking all units will have the following commands available (except as noted) as part of their right-click menu:

- **Toggle Activation <CTRL + A>**: This functions toggles a unit for activation purposes, a red or blue colored border (Japanese or Allied respectively) will appear on the counter and serves a reminder for which units are active in the current offensive. Use the same command for both turning on and off this feature.
- **Place Battle Marker <CTRL + B>**: This functions create a battle marker in the hex occupied by the unit and will appear on top. This is a convenience function for placing one quickly via menu or hot-key. You can also create them by pulling them from the Marker Window (see Battle/Range markers further below).
- **Toggle Battle Tag <SHIFT + B> (Doesn't appear on the right-click menu)**: This function is an alternate way to designate battles. Sometimes units will fight at range, and you want to mark them as participating in a specific battle, sometimes air units in the same hex will fight at different battles and the battle marker isn't suitable to note this. By using this command you activate a battle tag in the upper left corner of the unit. This works exactly like a battle marker; use a letter command (<A>, , <C>, etc.) to assign the unit to the appropriate battle.
- **Toggle Moved Status <CTRL + M>**: As counters are moved across the map VASSAL keeps track of the fact that the unit has moved and will display a properly colored "tag" on the right side of the counter to indicate that it's been moved. Use this command to clear the movement status of this individual unit.
- **Toggle Supply Status <CTRL + S>**: You can use this function to indicate a unit is out of supply. It will show a solid magenta colored border and a band in the same color across the bottom of the counter shading the background of the unit but still showing its strength values. As a practical feature any air units and carriers marked O.O.S in this fashion will automatically stop showing AZOI even if this AZOI display feature is turned on.
- **Flip the counter <CTRL + F>**: Covered earlier but repeated here for completeness, if the counter is a 2 step unit or a marker with two sides it will have this command available.
- **Full Strength / Reduce <SHIFT + F>/<SHIFT + R> (Doesn't appear on the right-click menu)**: If the counter is a 2 step unit it will have these commands available. Basically allows you to switch the unit to Full Strength or Reduced strength regardless of current status. This may be useful in a stack that needs to reduce all its full strength units but without flipping existing reduced strength units. Or restore one or two reduced units to full strength in a stack with other full strength units without having to individually select them out of the stack. It's situational but convenient.
- **Delay <CTRL + D>**: Some allied units have this command available so they can be sent directly to the Delayed Reinforcements Box. Note that the box now has an invisible grid and units have enough room to form 8 separate stacks without covering the descriptive text within the box. The command segregates and fully uses the 8 spaces and will split them into 3 stacks for US Navy air, ground and naval units, 3 stacks for Commonwealth air, ground and naval units plus 2 stacks for US Army air and ground forces.
- **Eliminate <CTRL + E>**: This command will a send a unit to the eliminated units pile in the proper region. Note that many HQ units DON'T have this command because they are supposed to go to the turn track if eliminated (in which case use the Next Turn command to send them to the track automatically).
- **Command Area <CTRL + C> (HQ units only)**: This toggles the general command area covered by the range of the HQ. The color will roughly correspond to that of the counter's background color. Note that this is useful primarily to see if a battle hex is within a range of an

HQ (since the range is "as the crow flies"), depending on whether you are tracing a supply or activation path an HQ may not reach a unit even if it's within nominal range of the HQ.

- **Next Turn <CTRL + N>** (non-dot HQ Units only): Use this command to send an HQ to the turn track if applicable. It will go to the next turn (note that for Turn 12, the command will "wrap" and send HQs to Turn 1).

Japanese/Allied Hand

For those not using a separate online card tracker like ACTS, the game can keep track of cards during play. Each faction has its own hand window. The windows are public so each side can see the number of cards their opponent is holding and whether or not they have a Future Offensive card played. Both windows have a similar layout: The left hand side is a space for setting face up cards removed from the game, the next space is the deck of cards to draw from. The space immediately to the right is the discard pile area. After that there is small framed area for placing one Future Offensive card. Then there is a wider rectangular space for the hand of cards. In general cards are drawn face down, so observers and the opponent only see the backs of the cards, while the owner can see "through" the card. There is a colored frame with the text "HIDDEN" in the lower right corner to indicate the owning player that this card is face down and unrevealed to anyone else. Cards can be flipped like many other game pieces.

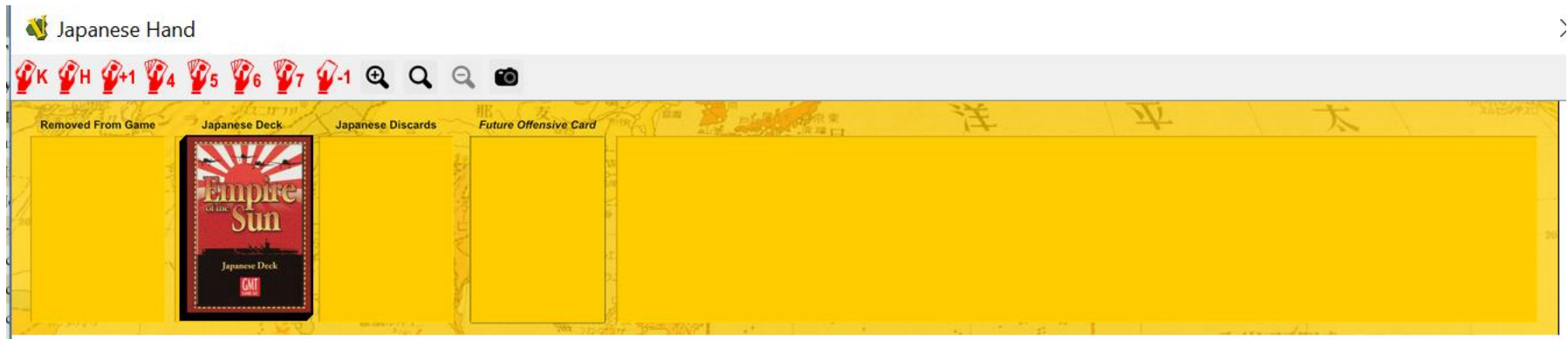


Figure 3. The Japanese Hand Window.

The Japanese player owns the Japanese cards and the Allied player owns the Allied cards. However the Referee player can see both side's cards (this is helpful for solitaire play and referee games).

These windows have a toolbar with buttons with some helpful features for each side. Both sides have buttons to allow for drawing 4, 5, 6 or 7 cards. In addition there is a button for one additional draw (+1). For Japan there is the additional feature of a button for randomly discarding one card (-1), as well as a button (K) for drawing the specific card "Vice Admiral Kondo" (Japanese Card #47) per rule 17.25E. Finally the Japanese have one button (H) for drawing the three 1942 historical hand cards "Vice Admiral Kondo", "Colonel Tjusi" and "Central Force" (Japanese Cards #47, #3, #59 respectively); after holding these three cards in hand, Japan can click the 4 button to complete its seven card hand.



Figure 4. The Allied Hand Window

The Allies have one button (A) for drawing the "Arcadia Conference" (Allied Card #4) event into their hand per rule 17.25D. Afterwards they can click the 4 button to complete their five card hand for the 1942 scenario. Otherwise if they decide not to take Arcadia they can click the 5 button to draw a normal five card hand. Both windows have buttons for increasing/decreasing the zoom level, setting it to a specific zoom and taking a snapshot of the card hand.

Card Piles

Right clicking on a discard pile in a player hand window allows the player to select a card for drawing back into their hand. This is one way to bring back a card but a better mechanism is to use the "Card Piles" inventory window which is separate from either hand window. Here, all four piles (Allied Removed/Discarded, Japanese Removed/Discarded) can be examined as a list of card titles with their most relevant stats. An individual card can be selected from this list and returned to a player's hand if need be.

Eliminated Units Pile

This window brings up both sides eliminated units piles. It has two general regions; one for Japanese forces and one for Allied forces, organized vertically. In addition, each region has separate rows for Pre-War units (that never come back unless a card event says so), Air units, ground units and naval units. By double clicking a row it will fully expand and show the units, you can select any one and move it from the window back to the map as a replacement whenever required.

Japanese/Allied Reinforcements Chart.

These windows not only show the reinforcements for each turn or available via special event, the actual counters are here as well. Select and pick up any reinforcement to place on the map. Use the delay command for Allied units that have been delayed by the War in Europe and send them to the box. Note that the Japanese Tokyo Express marker is in the Japanese Reinforcements window (since only one can exist at a time it's treated more like a unit than an actual marker to prevent duplicates).

Markers Window

Various game markers that aren't already on the map can be created from this window. They are in four separate categories as tabs and many can be created over and over as needed (even though for many of them it makes no sense to have more than a single marker). All have delete functions and the battle markers have a cloning function.

A. Battle/Range Markers

This will be your most used marker in the entire game. It's a small green square marker with a letter to indicate a battle and you place it on the hex that battle is occurring. You can use the same marker next to units to indicate they are participating in that battle at range. When you select a battle marker use any of the letter keys (<A>, , <C>, etc.) to switch that battle marker's letter appropriately.

The range marker is a tool to help trace a supply or activation path by counting hexes (or legs of movement). You place the circular marker from the window on the map and it starts with a "0", each time you move it, it will mark its path and increase the count by one. This allows you to demonstrate a supply/activation path and its length, since the marker keeps track of its movement.

B. Card Event Markers

All card event markers are kept here. Please note this is different from card event "units" like 14th Air Force, 7th Armored Brigade or Tainan Air Group which are kept in the reinforcements windows of their respective sides. Here you will find Convoy Escort marker, the Doolittle Raid marker, the Panama Canal Attacked marker and so on. For the card event "Ants" there is a Barges marker but remember to flip the Japanese ASP marker as well. The reverse side of this marker is the Allied PT-Boats marker. Paratroopers are in this window as well.

C. National Status Markers

Here are all the national status markers that can be used to indicate the surrender of a country are available, pick and place on the map as needed. For Alaska Occupied and Hawaii occupied it's suggested to place the marker on the turn track corresponding to the first national status segment continuous occupation has started to properly keep track of the condition. If Occupation then occurs move it from the turn track to a space on the map near the territory in question. These two markers can use numeric hot-keys to send them to the proper turn (<1> through <CTRL + 2>).

D. Miscellaneous Markers

Future Offensive markers are here to keep track of when a card was played as a Future Offensive. It's recommended to place it on the turn track so players are aware which turn the card was set aside (so you do not play a Future Offensive in the same turn it was designated as such). Strategic Warfare markers are also created from here as well as a China OC Offensive marker. You can place these on the turn track.

AZOI Menu Toolbar

Use this menu to toggle AZOI on or off. This a change from previous modules which functioned as a toggle and could leave units completely out of sync and cause frustration. Now turning on or off AZOI will completely turn on or off regardless of whether an existing unit was already showing or hiding it's AZOI. This feature is incredibly helpful to visualize the influence of air units and carriers for purposes of establishing supply and communications lines. Generally speaking all Japanese air zones of influence will appear as shading a hex in red (it's translucent), while all Allied zones of influence will appear in a hex as a blue shade. Where one side's AZOI neutralizes the other they will overlap and form a purple

color. Allied Long range bombers will have a striped diagonal solid lines in blue because they can't neutralize Japanese AZOI and the shade of the hex will generally remain red even if it has a few lines.



Figure 5. Shade patterns for Air Zone of Influence

There is one more button and it's to change the display of AZOI from solid patterns to line patterns. For those who find the shading much too obtrusive switching to this form of display will cause the Allied and Japanese AZOI to go from a shade to translucent diagonal lines in separate orientation but still blue and red in color. In hexes where one side's AZOI neutralizes the other it will form an "X" pattern as each side's lines will cross each other's. For this case the Allied Long Range Bomber's pattern will change from line to a dotted one. The Japanese AZOI will

completely align with these dots and cover them to signify that they cancel out the LRB's AZOI and the latter's influence can't neutralize the former's. Use whichever pattern you find more suitable for play.



Figure 6. Line Pattern for Air Zone of Influence

It is strictly optional and you can leave it turned off as desired. As a helpful feature, toggling a unit's Supply Status will automatically turn off it's AZOI if it's being displayed, such out of supply units can't generate zones of influence. As soon as you toggle the supply status it will display AZOI once again.



Figure 7. Overlay shading Philippine hexes

functions normally. This is less obtrusive than the actual game markers. Note that the Kwai Bridge is also toggled here and covers two specific hexes; hex 2108 and 2109.

Movement Trail Options

Similar to AZOI this menu has options to universally turn on or off unit trails for all units at the same time on the main map. Japanese units will have red lines as they move across the map and Allied units will have blue lines. Note that at each stop a white circle with a properly colored outline is shown. This can be useful to indicate the "legs" of air units or the specific route of naval units as they move across the map. Trails work in conjunction with "moved" Status. Any unit that is "unmarked" cleans up its movement trail in addition to the "moved" tag.

Overlays

This new feature is meant to help point out all the hexes that belong to a particular nation or territory. Initially when you turn it on ALL such hexes will be displayed. You can turn off individual countries/territories in the same menu and VASSAL keeps track of which ones are active and which ones inactive. They are solid shades of various colors. It is recommended you turn off AZOI temporarily while you check to see which hexes belong to which entities. It's not really meant to use continuously for playing, more for checking, especially during the National Status Segment.

Inter-Service Rivalry

To simplify the status of inter-service rivalry, it is toggled exclusively through the menu rather than individual counters. This menu will automatically display the rivalry symbol (white triangle) on HQ's and flip the relevant ISR marker on the map. This helps keep all counters synchronized.

Route Toggles

This should be self-explanatory but the various infrastructure routes that must be built in the China-Burma-India Theater (Jarhat, Imphal and Ledo) are toggled here. Routes that are red in color are ones that aren't built yet. Once a route is toggled to black it means the route is built and